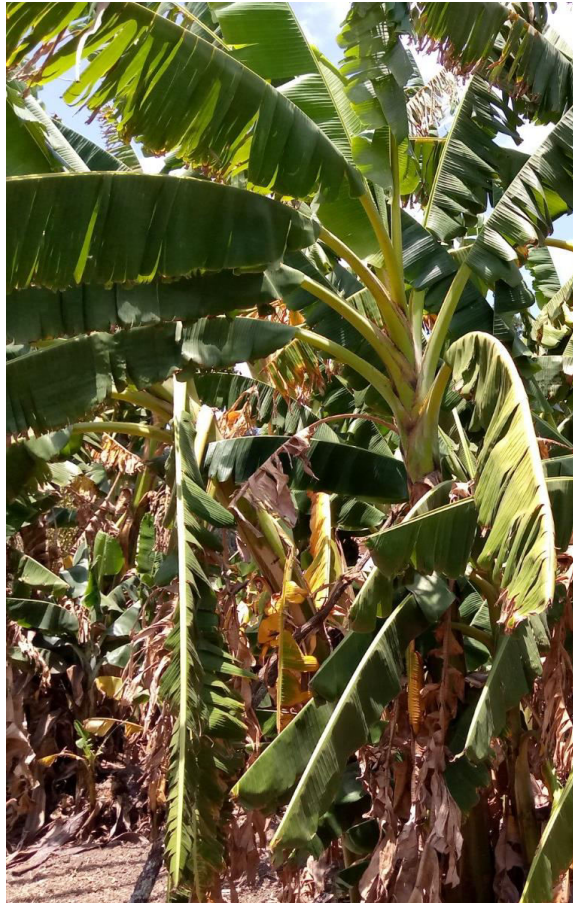


DESCRIPTOR FOR FARMERS KNOWLEDGE ON SWEET BANANA

1 IDENTIFIERS
FIELD WORK DATE: 2019/03/18
FIELD WORK ACTIVITY: FOCUSED GROUP DISCUSSION
NAME OF LOCAL INFORMATION PROVIDER: NJERU BARAKA FARMERS GROUP
AGE: 25-59 YEAR
MAIN OCCUPATION: FARMERS
ADDRESS : NJERU VILLAGE
ETHNIC GROUP: AGIKUYU,ABAGUSI,ABALUHYA,AMERU
NAME OF PERSON CONDUCTING THE INTERVIEW: ELPHAS MASANGA-SEED SAVERS NETWORK
2 PLANT IDENTIFICATION
GENUS <i>Musa</i> SPECIES <i>acuminata</i>
COMMON NAME OF CROP OR WILD SPECIES: SWEET BANANA
SPECIES RICHNESS: -
3 SITE (ECOGEOGRAPHICAL CONTEXT)
COUNTR KENYA COUNTY NAKURU SUB COUNTY GILGILWARD:KIAMBOGO VILLAGE NJERU
LATITUDE: E36° 11.866' LONGITUD: E36° 11.866' ELEVATION: 8611 ft
LOCATION OF FIELDWORK SITE
NAME OF THE LOCATION OR NEAREST PLACE: KIAMBOGO

DISTANCE TO SITE: 140KM FROM SEED SAVERS NETWORK OFFICES
TYPE OF DISTANCE: ROAD DISTANCE
DIRECTION FROM THE NEAREST PLACES:-
LAND ELEMENT: UPPER SLOPE
4 RELATIVE ABUNDANCE
IN UNCULTIVATED AREAS:-
NUMBER OF COLLECTING SITES/NICHES:-
ESTIMATED AREA OF EACH COLLECTING SITE:-
FREQUENCY OF COLLECTION (if uncultivated) :-



Name of the cultivar/landrace/botanical variety or wild form				
Plant further identification	Local vernacular names	Litoke lia sukari-litamwa lia mwayo		
	Language(s) of local vernacular name	Kisii-luhya		
	Local name meaning	Has a sweet taste		
	Biological status	Traditional cultivar/landrace		
Relative abundance	Area cultivated for each cultivar			
	Number of plants			
	Total uncultivated area			
	Relative abundance of the plant (if uncultivated)	Rare		
TRADITIONAL KNOWLEDGE ABOUT PLANT	Distinguishing traits /characteristics used	Main reasons for using the cultivar / landrace or wild form	Food security/scarcity;- Resistance to abiotic stresses ; -Resistance to biotic stresses	
		Parts of the plant used	Leaf;- Fruit	
		Plant uses	Food (fresh, processed, cooked);- Fodder or fodder additive (for animals);- Environmental use (erosion control, windbreaker, firebreak)	
		Parts of the plant used	Fruit;- Leaf;-stem trunk	
		Traits attribute	Taste	
		Agronomic traits	Yield	
		Abiotic stresses	Drought	
		Biotic stresses	diseases	
			Pests	
			Other biotic stresses	

	Quality traits related to the food uses	Organoleptic qualities		Taste, flavor (pungent, sweet, acid, bitter)
		Nutritional qualities		Source of energy
		Other quality traits		
	Market traits			Marketability;- Transportability ;- Shelf life/storage ability
	Social aspects	Division of labour by gender	Labour	Sowing ;- Harvesting ;- Conservation/storage ;- Processing ;- Utilization
			Gender	Both
	Socio-economic characteristics		Seed supply	Own harvest;- Exchanges with relatives, neighbours
			Main use of plant	Home consumption (including for animal fodder)
			Main form of market outlet	Local

COLLECTORS NOTES

1. It's high tolerant to diseases
2. Used to relieve constipation
3. Flowers used to fight ulcers
4. Roots used to fight digestive disorders
5. The peel used as antifungal